

ACCESS FLOORING

USER GUIDELINES

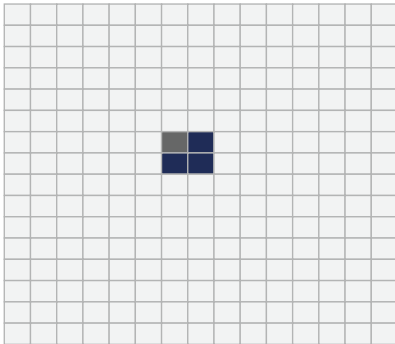
OPENING AN ACCESS FLOOR SYSTEM

The panels of the access flooring are fixed in their position by mutual support. The fixation is therefore impaired when individual panels are removed.

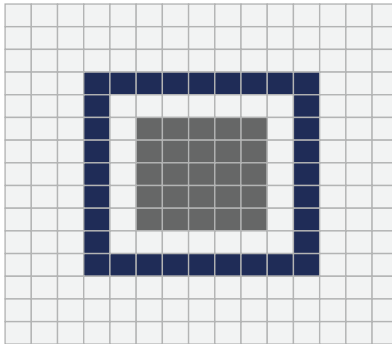
When opening the access floor, no more panels than absolutely necessary may be removed. Special care must be taken that no long alleys are created by the opened access floor panels.

Horizontal forces are only permissible as partial forces of the permitted load.

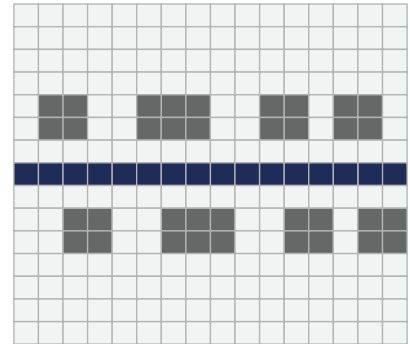
The loading details refer to a closed access floor. For this reason, machine transport should only be carried out with the raised floor closed.



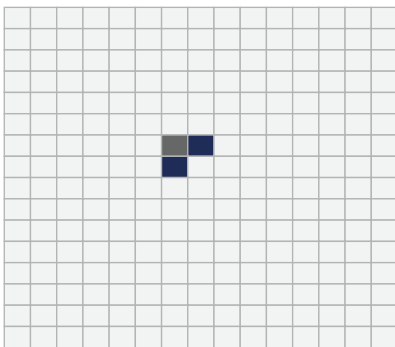
WRONG



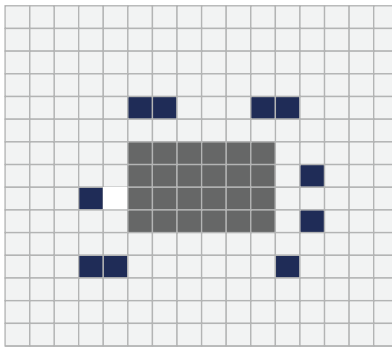
WRONG



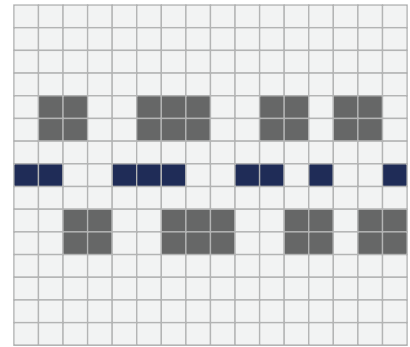
WRONG



CORRECT



CORRECT



CORRECT



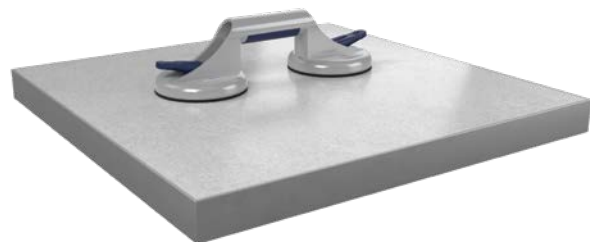
Removed access floor panels



Machines, Computers etc.

TOOLS

The access floor panels may only be picked up with the aid of suction lifters, claw lifters or lifting hooks (steel ventilation plates). Never pick up the panels with an unsuitable tool such as a screwdriver or chisel. Do not place removed floor panels on their edges. The lifting tool must be detached from the access flooring panel immediately after use to avoid possible damage to the floor covering.



Tate.®

Tate Global GmbH

Zum Stadion 4, 63808 Haibach, Germany

T: +49 (0) 6021 63949-0 E: infoDE@tateglobal.com W: tateglobal.com/de

© 2025 Tate Global GmbH.

Tate Global GmbH reserves the right to amend or add to the product specifications without prior notice as part of our commitment to continuous improvements and the observance of legal changes.

tate-access-floor-user-guide-en-de-v2 6/2025



#planetpassionate

ACCESS FLOORING

USER GUIDELINES

CLOSING THE ACCESS FLOOR SYSTEM

Remove dirt from the pedestal head. Check the position of the gaskets and if necessary, the stringers for correct fit. Make sure that the installation direction of the surface covering matches that of the surrounding panels. After installation, the dismantled panels must be placed in their original position, whereby they must not be warped or twisted. In addition, after inserting a plate, it must be checked for correct seating before further plates are inserted.

CLIMATIC CONDITIONS

During installation and use, the room temperature must be between 15°C and a maximum of 25°C, the relative humidity between 40% and 65%. A change in the climate outside the above-mentioned tolerances causes swelling or shrinkage of the panels depending on the material, as well as a possible change in the conductivity values.

CUTOUTS

On-site cutouts must be made with at least 100 mm clearance from the edges of the floor panels. The cut edge must be sealed. Depending on the load requirements and the shape of the cutout, additional measures must be taken, such as additional pedestals, stringers or bridging profiles.

UNDERSTRUCTURE

Pedestals, reinforcing profiles and other parts of the substructure must not be changed. If, in exceptional cases, it is necessary to remove elements of the understructure, e.g. for subsequent installations, do not put any load on the access floor system. Otherwise you risk a collapse of the system. Removed components must be reinstalled after having finished the works, so that the load capacity and stability are re-established both vertically and horizontally.

CABLE INSTALLATION

Do not pull cables over the edges of the panel. Do not pull of or damage pedestal feet when you pull cables around pedestals in the void.

PROTECTION MEASURE IN CASE OF EXTRAORDINARY LOADING

If heavy loads are transported, the floor must be covered by thick boards, chipboard panels or steel panels which protect the covering and the gluing from damages and distribute the loads on a larger area of the access floor construction. Do not make any transports over the floor if it is partially opened.

MAINTENANCE OF COVERINGS

The maintenance instructions of the flooring manufacturer must be strictly followed.



Tate Global GmbH

Zum Stadion 4, 63808 Haibach, Germany

T: +49 (0) 6021 63949-0 E: infoDE@tateglobal.com W: tateglobal.com/de

© 2025 Tate Global GmbH.

Tate Global GmbH reserves the right to amend or add to the product specifications without prior notice as part of our commitment to continuous improvements and the observance of legal changes.

tate-access-floor-user-guide-en-de-v2 6/2025



[planetpassionate](https://www.planetpassionate.com)